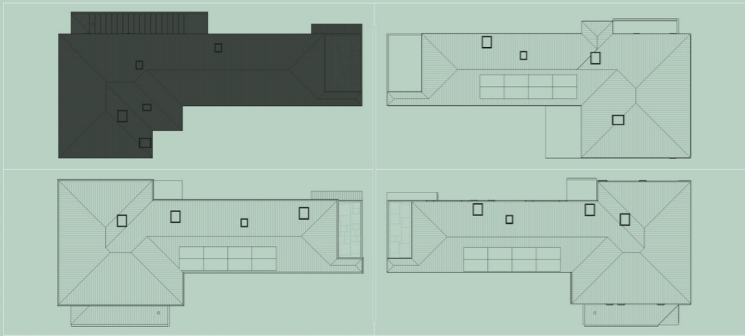


DANIELS STREET

HOUSE 1

DANIELS STREET

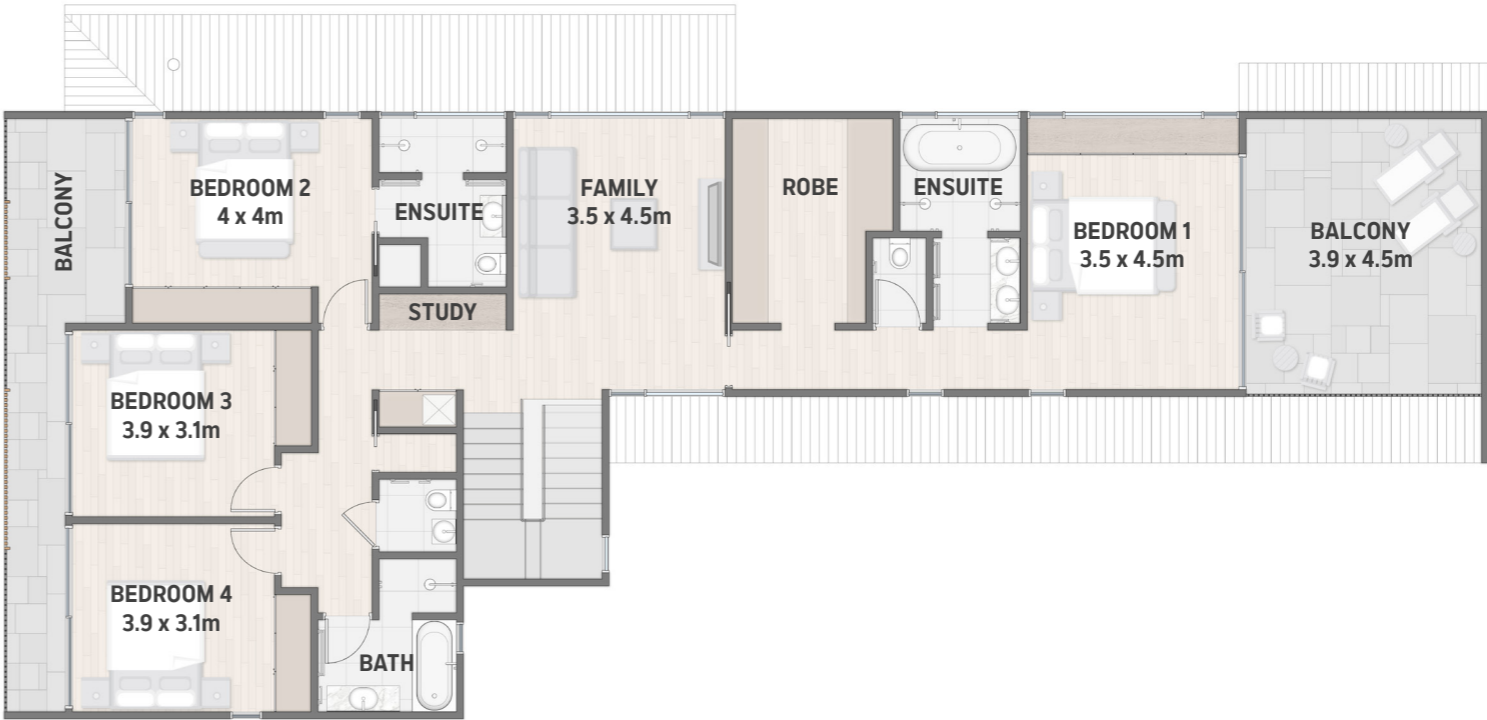


LOWER	INTERNAL AREA		147m ²
	ALFRESCO, POOL & GARDENS		160m ²
UPPER	INTERNAL AREA		131m ²
	BALCONIES		32m ²
LAND TOTAL		400m ²	
BEDROOMS		4	BATHROOMS 3.5
LIVING		2	PARKING 2

Please note that this floorplan has been produced from consented plans prior to construction. Interiors are indicative and for illustrative purposes only and do not constitute a final representation in respect to size, form, dimensions, measurements, specifications or layout of the houses. An executed agreement for sale and purchase of real estate will be the sole binding agreement on these matters. Furniture and furnishings are not included.



GROUND FLOOR



LEVEL 1